

# stand *apart*

HOLIDAY HOMES COLLECTION 2024



**VICTORY**  
LEISURE HOMES

# Welcome

TO OUR 2024 COLLECTION

"At Victory, we know that holiday homes can be better. We get up every day to make that a reality. That's why we're delighted to introduce two brand new homes and refresh some of our favourites. First we have the Kahlo, our new flagship home with a unique mono pitch roof which showcases our innovative approach to design. We also have the Brontë, our beautiful new mid-range home, and we've given the ever-popular Lochwood and Lakewood models a beautiful makeover for 2024.

"Whatever the adventure, our collection of holiday homes have been created to give you a true feeling of a home away from home. Spaces that are made to be shared with your family (the dog included) and friends for generations to come.

"I hope you enjoy looking through this season's collection and if you'd like to find out more, visit our website or follow us on social media."

**Gary Corlyon,**  
**Managing Director**

[victoryleisurehomes.co.uk](https://victoryleisurehomes.co.uk)   [marketing@victoryleisurehomes.co.uk](mailto:marketing@victoryleisurehomes.co.uk)

## Contents

**04** CREATING  
YOUR VICTORY

**06** NOVUS

**08** BUYER'S GUIDE

**10** KAHLO

**16** LAKEWOOD

**22** RIVERWOOD

**28** BOWER

**34** LOCHWOOD

**40** BRONTË

**46** STONEWOOD

**52** BAYWOOD

**58** THE VICTORY  
FAMILY

**59** OUR  
SHOWGROUNDS

# Creating your Victory



## Innovation is in our DNA

Our team of innovation experts have turned traditional manufacturing processes on their head. From tweaks to interior configuration to working with our suppliers to develop materials that are more sustainable and future-proof - we never stand still in our commitment to give you the best holiday homes on the market.



## Quality craftsmanship

Quality is at the heart of everything we do. Our unrivalled craftsmanship is renowned across the country and our long-standing customers, with whom we've developed strong relationships, are a testament to this.

## You come first

Despite being one of the newest leisure home manufacturers in the UK, we're fast becoming the supplier of choice because of our reputation for customer service excellence. We aim to get it right first time. But on the rare occasion we might not, we make sure to put it right with no fuss. That's the Victory way.

## Two year warranty

The combination of solid construction and contemporary design, integrated with comfort and function, demonstrates the depth of knowledge and experience of the entire Victory team. This underpinning gives us the confidence to offer a two-year warranty to all purchasers within the UK subject to certain terms and conditions. For purchasers outside of the UK, please refer to your supplier for warranty details. The warranty available is additional to and does not affect your statutory rights under consumer legislation.



## Included as standard with your Victory:

- Novus wall system for a truly domestic look and feel throughout
- Novus composite floor to reduce bounce and save energy
- Top range models include our industry-leading lightweight, high-strength, fully galvanised chassis
- Sustainably-sourced materials to reduce the carbon footprint of all our products
- 100mm insulated roof
- 45mm wall insulation
- High compressive strength floor insulation
- Domestic gutters and downpipes
- Domestic interior doors and window frames
- Front and rear anthracite fascia and roof cappings
- Thermostatic shower mixer valve
- Low energy bulbs throughout and LED bulbs in all spotlights
- Steel pantile roof
- 10-year smoke detector and 2 carbon monoxide detectors
- Fire extinguisher and escape windows
- Exterior light near entrance

All features correct at time of print August 2023. Features and options subject to change.

## Accreditations

We're recognised by the best and partner with the best.





# Novus

## Stand apart with a Victory

The holiday home manufacturing process has been the same for decades. It has a reputation for being slow and 'behind the times'. Until now. Until Novus.

Novus is a construction process created by Victory that uses technology to improve manufacturing, bringing it firmly into the 21st Century. Think energy efficiency like never before. Think holidaying in a boutique hotel – with no more 'bouncing' floors or plastic joins on the walls, as you might experience in a traditional caravan. Think more space and contemporary design. Think Novus.

### What makes our homes different:

#### Floors

Fully bonded and insulated – removing bounce and reduced thermal bridging.

*Up to 100% thermal efficiency<sup>1</sup>*

#### Walls

Beadless walls with structural I-beams for improved thermal efficiency and a true home from home feel.

*85% improved thermal efficiency<sup>2</sup>*

Each of these small but important details provide a level of quality you've never seen before.

Excludes Victory Lifestyle models.  
<sup>1</sup> Based on current BS3632 Residential Park Homes Spec.  
<sup>2</sup> At wallboard joints  
<sup>3</sup> Per square metre

#### Roof

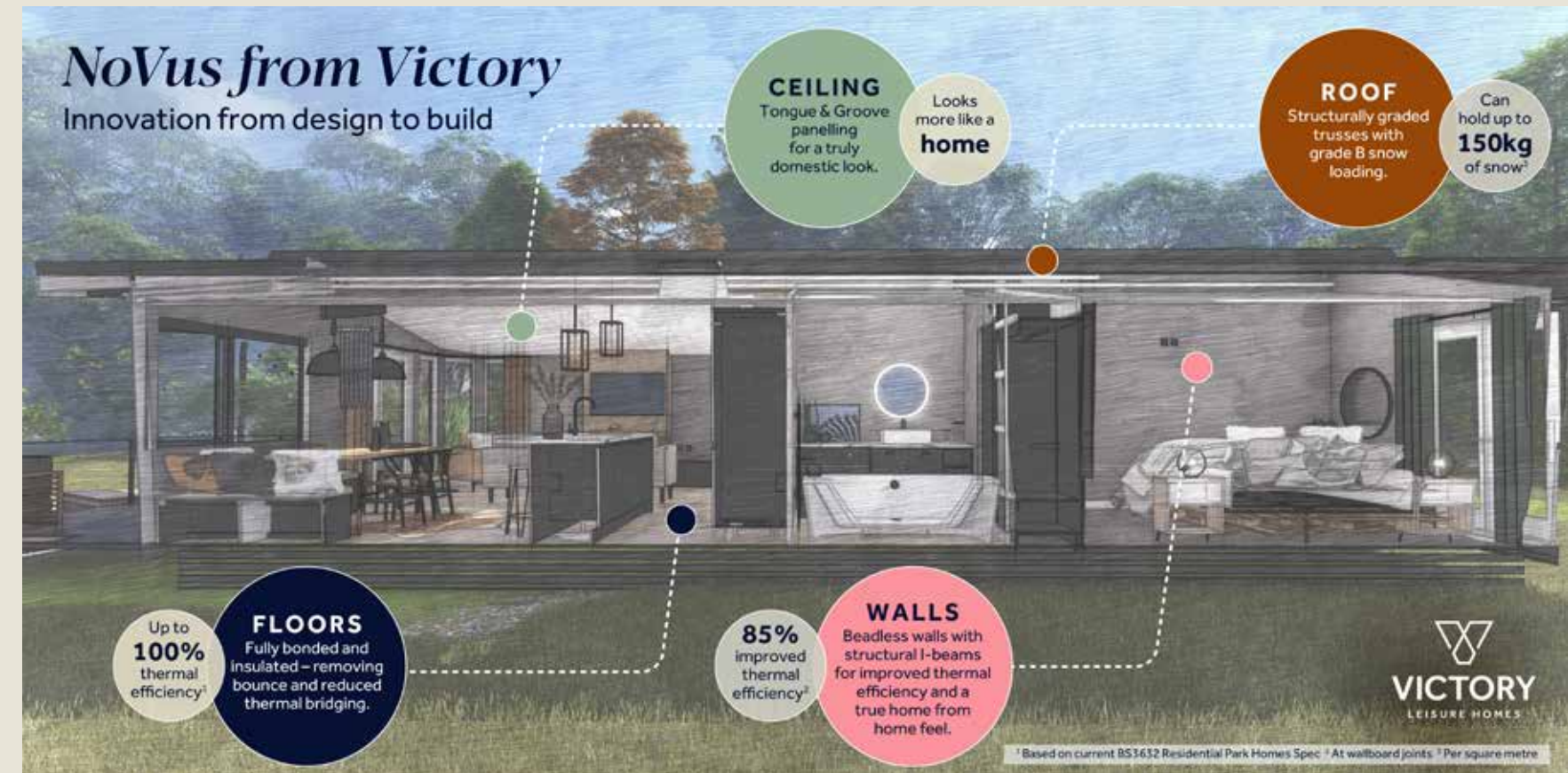
Structurally-graded trusses with grade B snow loading.

*Can hold up to 150kg of snow<sup>3</sup>*

#### Ceiling

Tongue & groove panelling for a truly domestic look.

Feels more like a home.





# Buyer's guide

## HOW TO BUY YOUR VICTORY

If you've always dreamed of owning a holiday home or lodge but don't know where to start, we've made it easier with our guide. From budgets to beach views, and pricing to pitch size - we've considered everything so you don't have to.

Before you make a decision, do your research to make sure your budget matches what you need and want. Consider things like insurance, whether you're renting it out, and how you might finance it.



### STEP 1

#### Find your dream location

Finding your holiday park is the first step in your decision to holiday home ownership. As a rule of thumb, we suggest sticking within a 2-3 hour drive of where you live, to make sure it's easy to make the most of your new dream home away from home. Visit the park and experience the on-site facilities. In other words, try before you buy!



### STEP 2

#### Choose your dream home

Our homes have been designed to suit a range of tastes and you're able to customise and add a variety of features to suit your needs. Do you need an en-suite? Do you want open plan or central lounge? Do you prefer a bath or shower? Do you love cooking up a storm in the kitchen? Will you have people staying over? And if you want to see our selection of holiday homes and lodges in person, visit our showground in East Yorkshire.



### STEP 3

#### Pick your dream pitch

Choose a pitch that suits you. You'll need to consider the size of your pitch, your view, parking, and how close you are to the facilities.



### STEP 4

#### Place your order

Place your order with one of our trusted parks or dealerships and we'll start hand-crafting your home in our factory.





# THE Kahlo

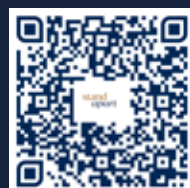
Introducing the Kahlo, our new flagship model for 2024. Experience a truly exceptional getaway like never before, featuring a groundbreaking addition to our collection – the striking mono pitch roof. The Kahlo is the epitome of luxury and style. With exceptional design and a standout exterior, it creates a lasting impression. The spacious interior provides ample storage and comfortable bedrooms, ensuring a tranquil stay.

Indulge in the luxury bath with a rainfall shower and enjoy modern amenities such as blackout curtains, USB plugs, and smart TV space.

The Kahlo leaves no compromises, offering a truly unforgettable holiday experience for you, the family and your friends.

## Key features:

- A beautiful mono-pitch roof for a striking look on pitch
- Open plan kitchen, dining and living room area
- No compromise on the second guest bedroom, which includes a unique wood feature wall and zip-link bed
- Luxurious master bedroom with en-suite
- Freestanding furniture throughout
- Luxury bath with rainfall shower
- Optional utility room to the hallway
- Optional office to replace guest bedroom



Scan to view full specification,  
or visit [victoryleisurehomes.co.uk](https://victoryleisurehomes.co.uk)









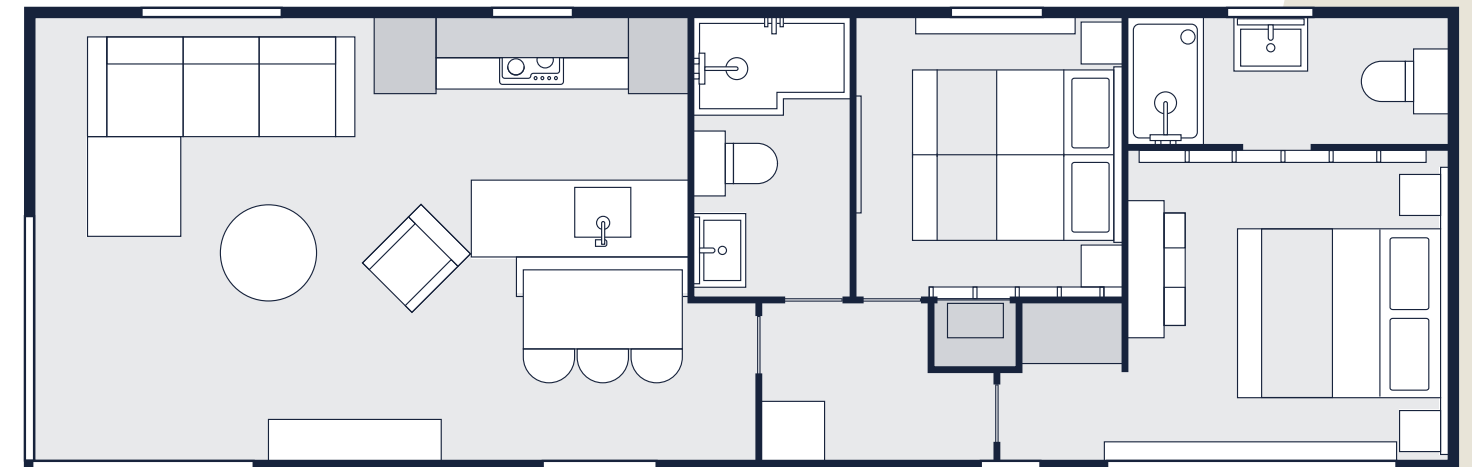


# Kahlo

## FLOOR PLANS

The Kahlo is only available in BS3632 residential specification.

Scan to view full specification,  
or visit [victoryleisurehomes.co.uk](https://victoryleisurehomes.co.uk)



1. 44 ft x 14 ft 2 Bedrooms



# THE Lakewood

Introducing the new 2024 Lakewood, our much-loved home designed to bring your favourite people together. With a refreshed look, including new fabrics, a feature fireplace with a modern slat wall, customisable seating options, upgraded dining area, and a unique hallway feature wall, the Lakewood pairs luxury with contemporary design touches. There's a reason the Lakewood remains a firm favourite in our collection...

Unpack, relax, and let the Lakewood transport you to your dream holiday.

## Key features:

- Customisable seating options
- Fully integrated appliances
- Luxurious master bedroom with walk-in wardrobe and en-suite shower
- Feature fireplace
- Luxurious freestanding lounge and dining furniture



Scan to view full specification,  
or visit [victoryleisurehomes.co.uk](https://victoryleisurehomes.co.uk)











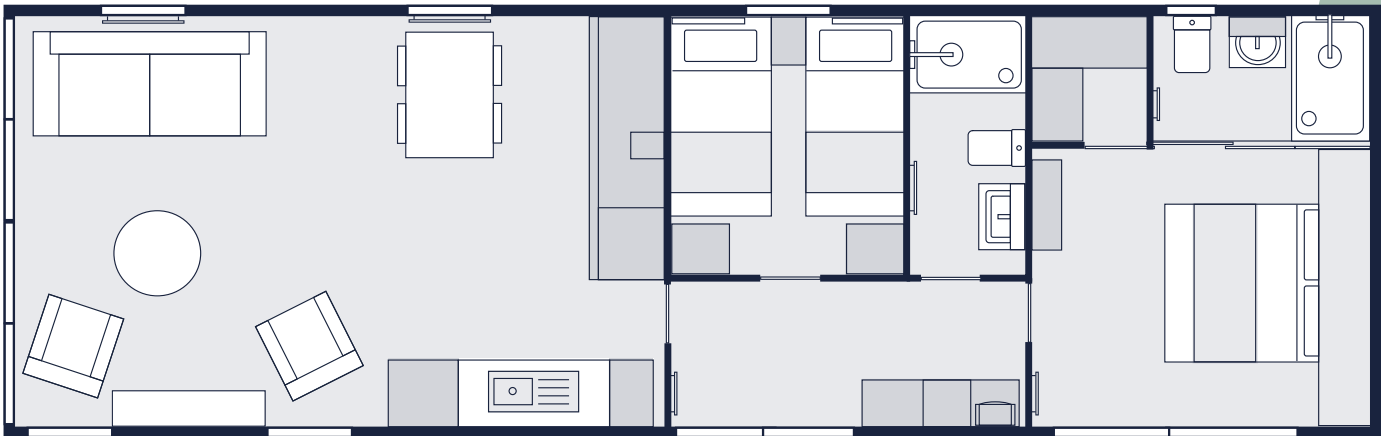
# Lakewood

## FLOOR PLANS

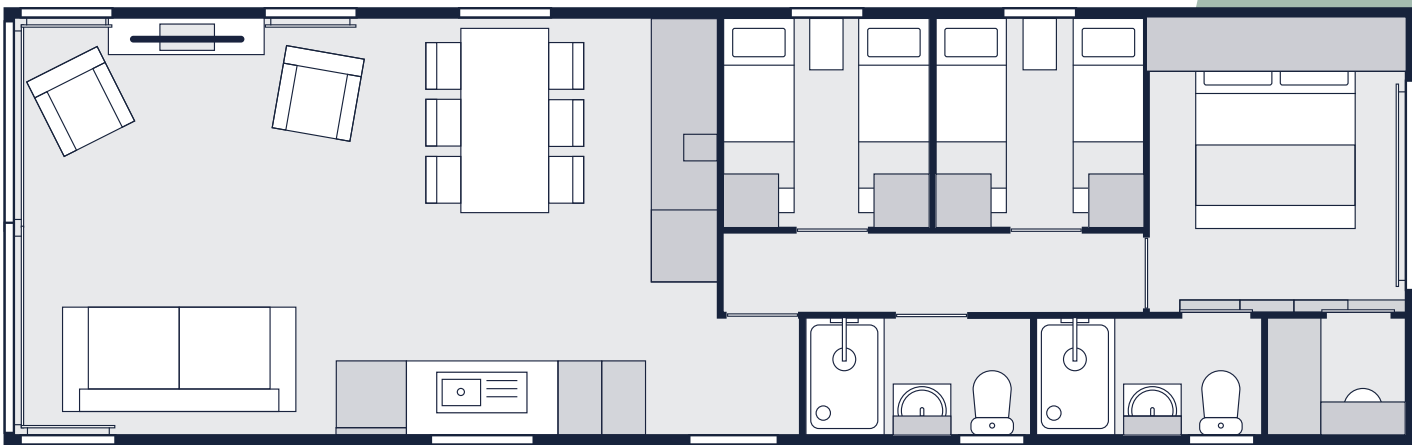
Scan to view full specification,  
or visit [victoryleisurehomes.co.uk](http://victoryleisurehomes.co.uk)



The Lakewood is also available in BS3632 Residential Specification.



1. 42 ft x 13'6 ft 2 Bedrooms (also available in BS3632 residential specification)



2. 43 ft x 14 ft 3 Bedrooms (only available in BS3632 residential specification)



# THE Riverwood

If you're looking to holiday in style, look no further than the Riverwood. With a boutique, luxury feel, the Riverwood boasts a Moroccan-inspired design with statement fabrics, sleek black accessories, pendant lighting and gold accent handles throughout. The master bedroom features a dressing area and ensuite so you can get ready in style. Available in two or three bedroom options, there's plenty of space for additional family members or guests.

It's time to staycation in style.

## Key features:

- Striking interior design
- Contemporary freestanding lounge furniture
- Integrated kitchen appliances and a half bowl Reginox caststone sink
- Available in two or three bedroom models



Scan to view full specification,  
or visit [victoryleisurehomes.co.uk](https://victoryleisurehomes.co.uk)







A boutique  
level of  
*Luxury*







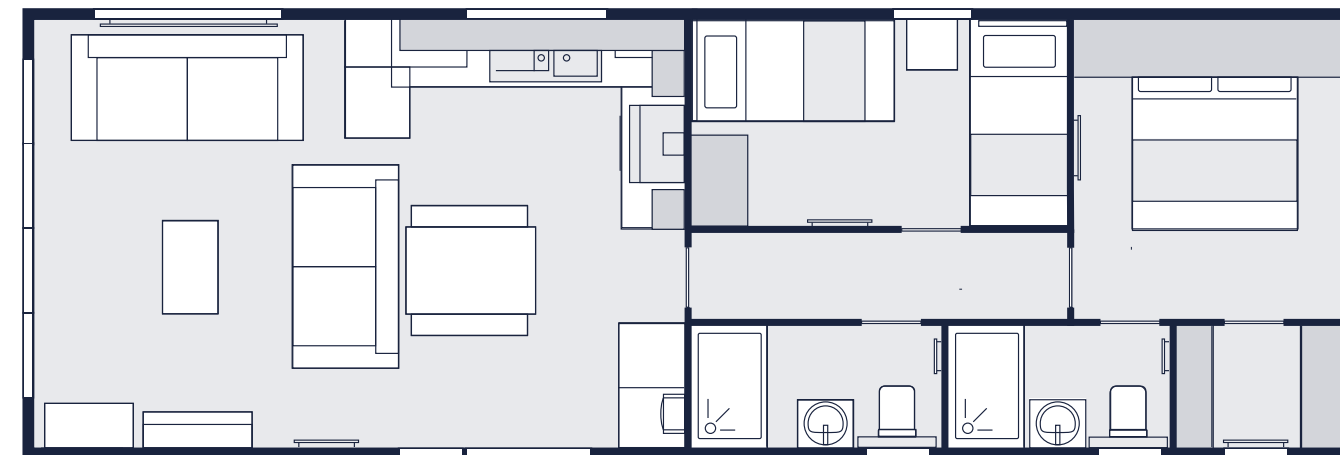
# Riverwood

## FLOOR PLANS

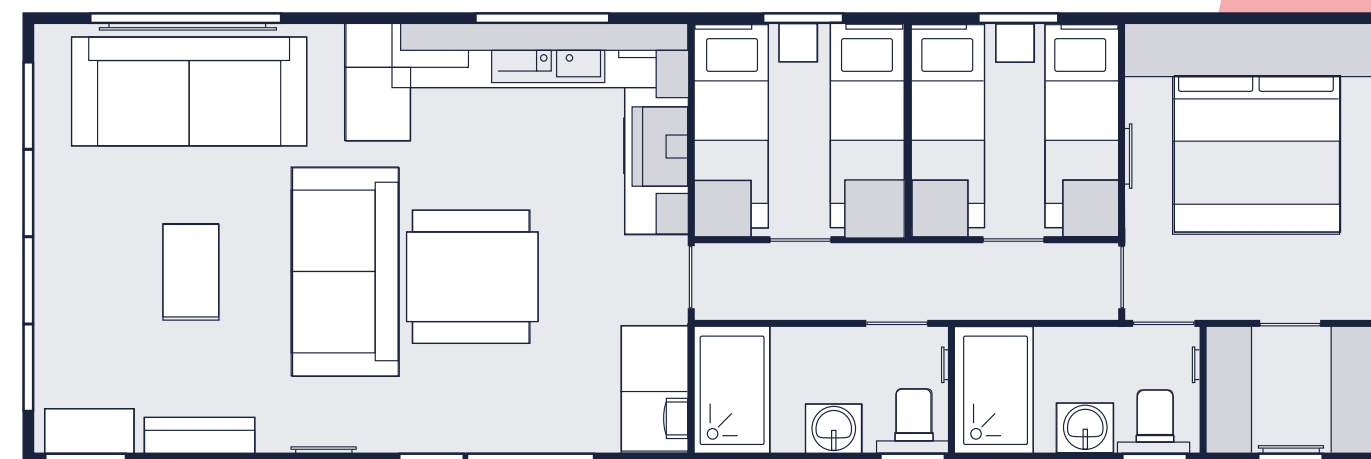
Scan to view full specification,  
or visit [victoryleisurehomes.co.uk](https://victoryleisurehomes.co.uk)



The Riverwood is also available in BS3632 Residential Specification.



1. 40 ft x 13'6 ft 2 Bedrooms



2. 41 ft x 13'6 ft 3 Bedrooms



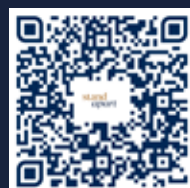
# THE Bower

The Bower has been designed with families in mind and has all the room you need to make treasured memories that will last a lifetime. The modern, on-trend design has been created so you can add your own finishing touches. It's also easy-clean, so you don't need to worry about sandy feet (or paws) or sticky fingers. You'll be spoilt for storage throughout. There's plenty of space to cook up the finest family meals – we've even made room for a highchair in the dining area so everyone can enjoy their holiday. With sockets in the perfect place (for baby monitors or hairdryers), and a large family seating area, you won't want to come home.

Park up, tuck your suitcases away, and relax – your perfect family holiday starts in the Bower.

## Key features:

- Plenty of storage space
- Stylish interiors with on-trend features
- Dim out curtains and blinds
- Family friendly and easy clean fabrics



Scan to view full specification,  
or visit [victoryleisurehomes.co.uk](http://victoryleisurehomes.co.uk)







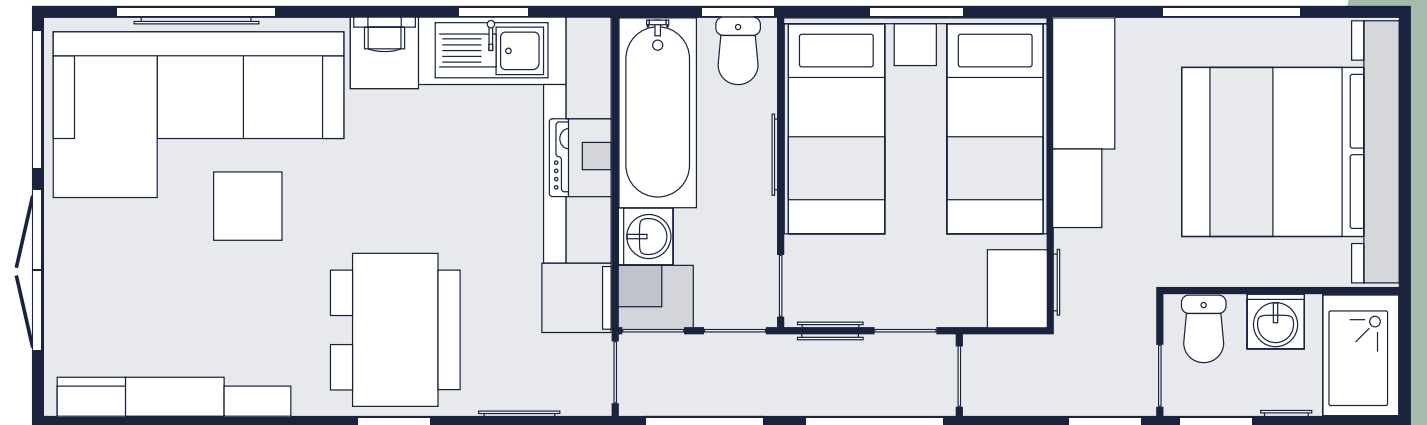




# Bower

## FLOOR PLANS

Scan to view full specification,  
or visit [victoryleisurehomes.co.uk](https://victoryleisurehomes.co.uk)



1. 40 ft x 12 ft 2 Bedrooms



2. 41 ft x 12 ft 3 Bedrooms



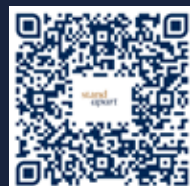
# THE Lochwood

The 2024 Lochwood has undergone a makeover, but we've kept all the features you know and love. If you're looking for sumptuous living with clever, space-saving design, the Lochwood has everything you need. Designed for families who are looking for a contemporary yet functional space, perfect for hosting and relaxing. The Lochwood boasts a comfy L-shaped sofa - which is perfect for movie nights - as well as a master suite with an en-suite.

Experience the charm of the Lochwood – a perfect blend of functional features and cosy, contemporary interior design.

## Key features:

- A modern galley kitchen
- Comfy L-shaped sofa
- Refreshed soft furnishings and lighting
- Available in 2 and 3 bed options
- Plenty of storage throughout



Scan to view full specification,  
or visit [victoryleisurehomes.co.uk](https://victoryleisurehomes.co.uk)







Sumptuous open  
plan *Living*





# Lochwood

## FLOOR PLANS

Scan to view full specification,  
or visit [victoryleisurehomes.co.uk](https://victoryleisurehomes.co.uk)



1. 38 ft x 12 ft 2 Bedrooms



2. 41 ft x 12 ft 3 Bedrooms



# THE Brontë

Discover the Brontë - a brand new home for 2024 that's perfect for a stylish staycation. With pops of smoke green and powder blue, the spacious open plan kitchen and living space is designed for comfort and entertaining. With two bathrooms, plenty of storage, and enough room for a generational staycation, the Brontë combines style and practicality. Enjoy natural light, optional double sliding doors, branded appliances, and the option for a lift-up bed. Complete with a cosy fire option and soft-close drawers, the Brontë is a perfect mid-range home that doesn't compromise on quality.

## Key features:

- Two interior options to choose from - Smoke Green or Lava Grey
- Full length windows at the front as standard
- Soft close kitchen cupboards and doors
- Two bathrooms with toilet and basin to master bedroom
- Spacious open plan kitchen/living space with ample seating
- Available in two or three bedroom model



Scan to view full specification,  
or visit [victoryleisurehomes.co.uk](https://victoryleisurehomes.co.uk)







Make a  
*Lifetime*  
of memories



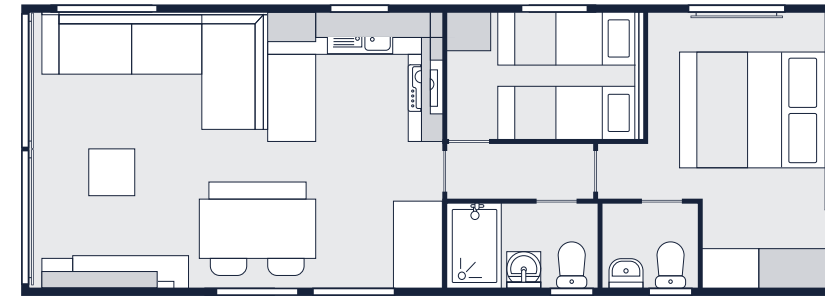




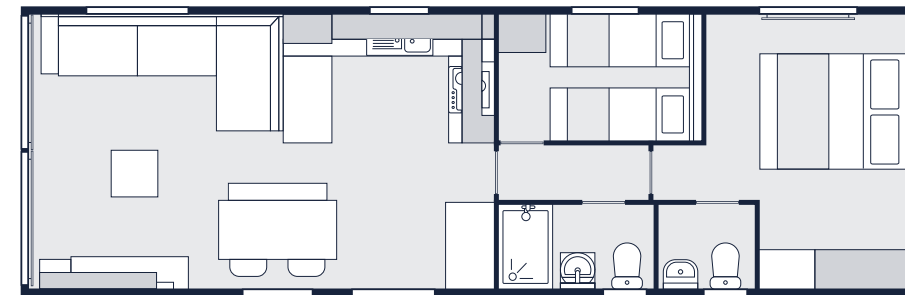
# Brontë

## FLOOR PLANS

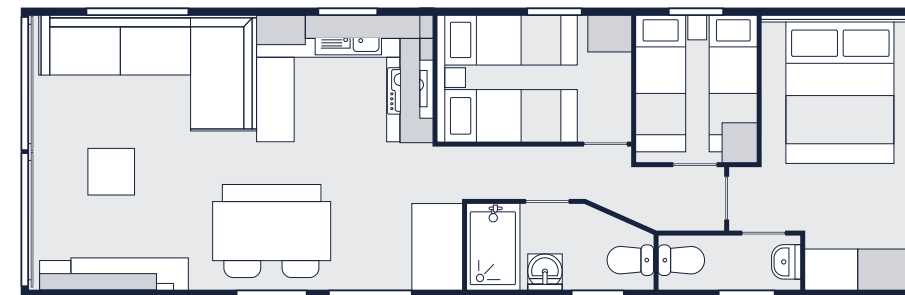
Scan to view full specification,  
or visit [victoryleisurehomes.co.uk](https://victoryleisurehomes.co.uk)



1. 35 ft x 12 ft 2 Bedrooms



2. 38 ft x 12 ft 2 Bedrooms



3. 38 ft x 12 ft 3 Bedrooms



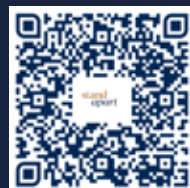
# THE Stonewood

Comfortable, charming and cosy, the Stonewood is a high-quality and affordable option to create holiday memories for years to come.

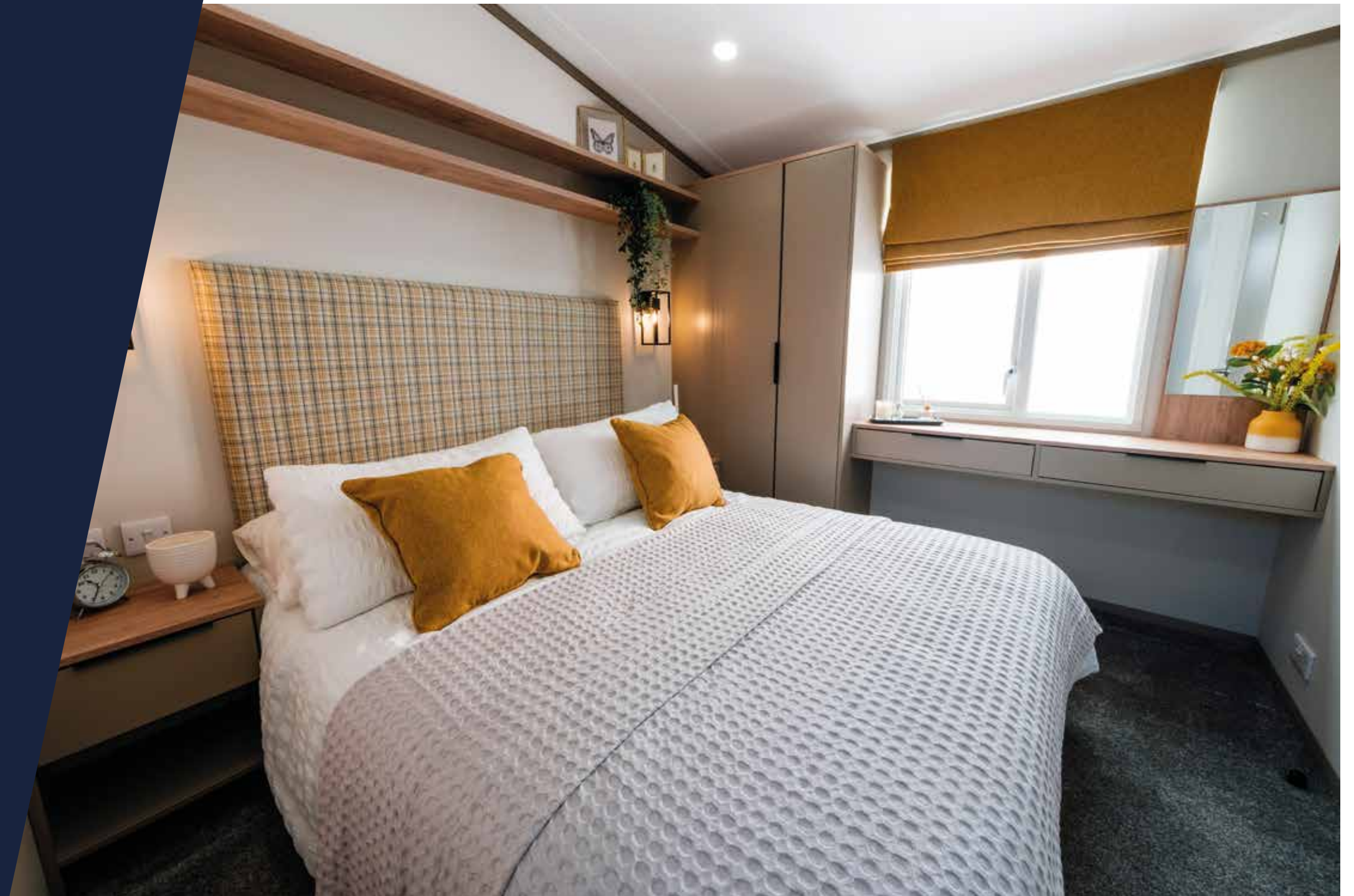
With a large kitchen/dining area, guests at the Stonewood can gather around the modern bench seating or whip up a feast in the kitchen. Contemporary open storage adds style and practicality to the bedrooms, and the easy to maintain bathroom comes complete with everything you need to enjoy holidaying your way in the Stonewood.

## Key features:

- Available in a range of model sizes
- Lots of natural light
- L-shaped sofa with plenty of storage
- Neutral wood tones throughout



Scan to view full specification,  
or visit [victoryleisurehomes.co.uk](https://victoryleisurehomes.co.uk)







A  
*modern*  
traditional  
holiday home



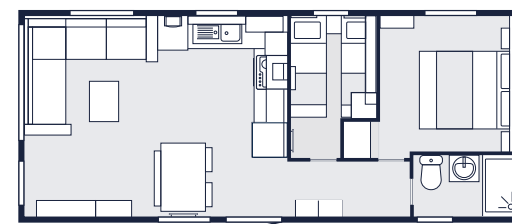




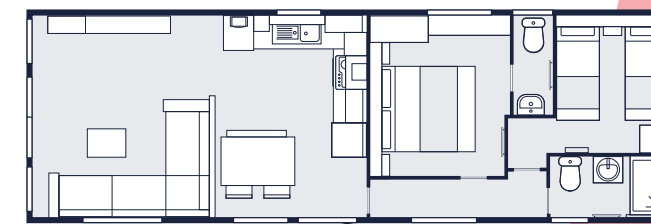
# Stonewood

## FLOOR PLANS

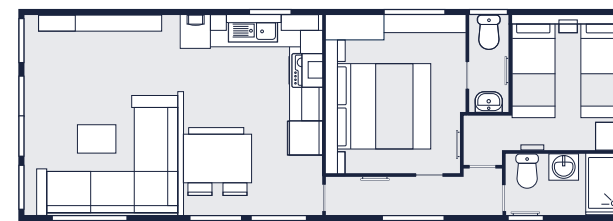
Scan to view full specification,  
or visit [victoryleisurehomes.co.uk](https://victoryleisurehomes.co.uk)



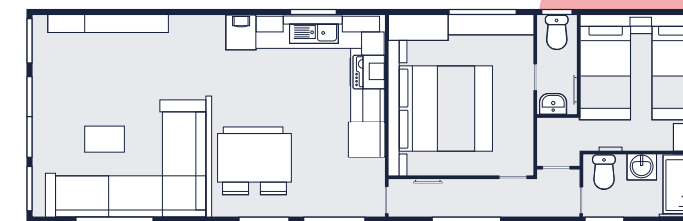
1. 29 ft x 12 ft 2 Bedrooms



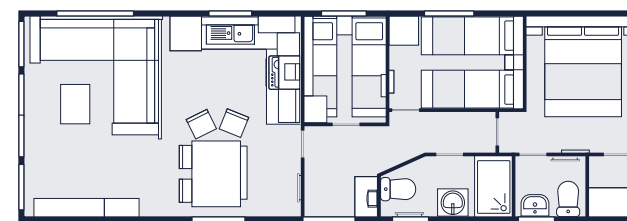
4. 37 ft x 12 ft 2 Bedrooms



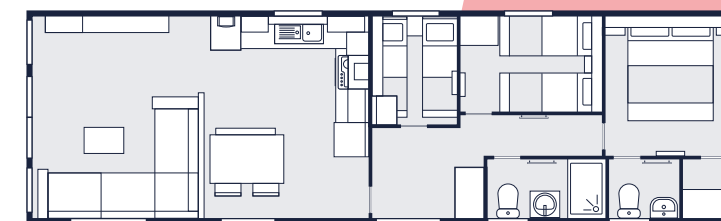
2. 35 ft x 12 ft 2 Bedrooms



5. 39 ft x 12 ft 2 Bedrooms



3. 36 ft x 12 ft 3 Bedrooms



6. 41 ft x 12 ft 3 Bedrooms



# THE Baywood

Packed with everything you could possibly need, the Baywood holiday home is perfect for young families and first-time buyers who want to escape the everyday and staycation in style. With a new centre lounge option for 2024, an on-trend colour scheme, and plenty of storage and holiday must-haves, the Baywood offers fuss-free family holidays and a lifetime of memories. So pack your board games, stuff your cases, and start your adventure.

## Key features:

- New centre lounge option
- Lots of natural light
- L-shaped sofa with plenty of storage
- Neutral wood tones throughout



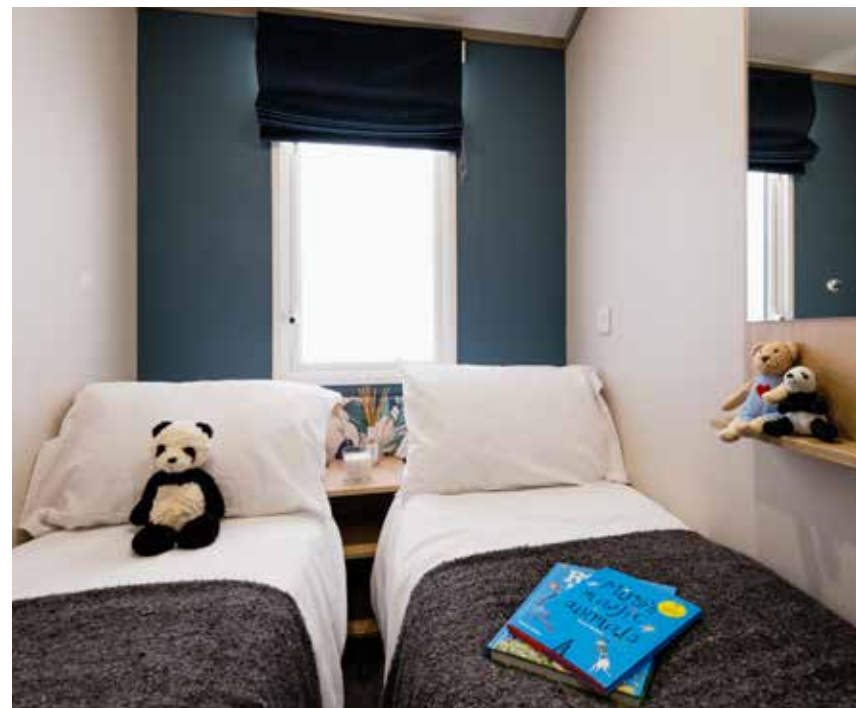
Scan to view full specification,  
or visit [victoryleisurehomes.co.uk](https://victoryleisurehomes.co.uk)







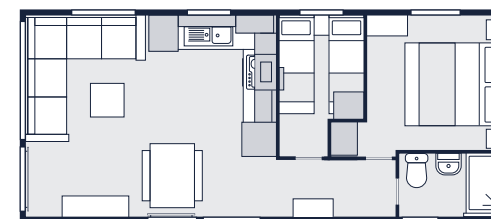




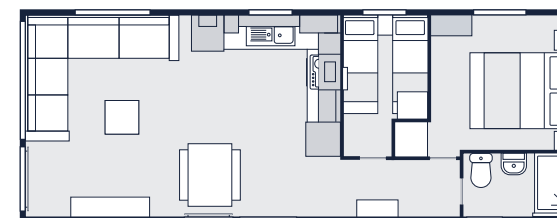
# Baywood

## FLOOR PLANS

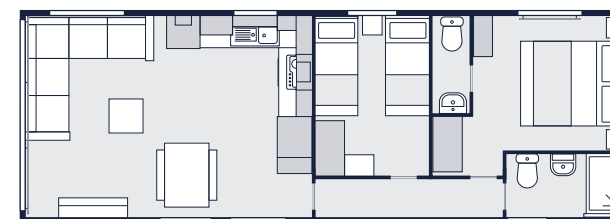
Scan to view full specification,  
or visit [victoryleisurehomes.co.uk](http://victoryleisurehomes.co.uk)



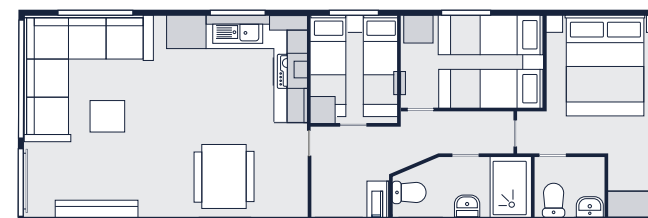
1. 28 ft x 12 ft 2 Bedrooms



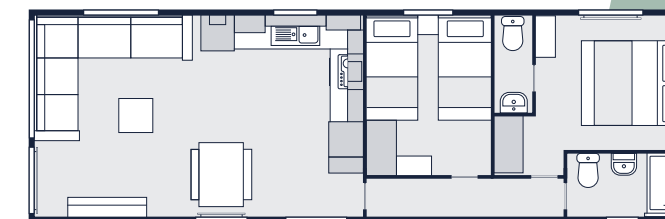
2. 32 ft x 12 ft 2 Bedrooms



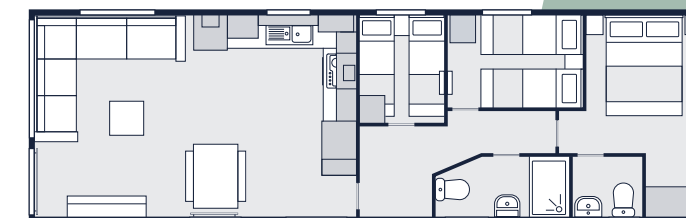
3. 35 ft x 12 ft 2 Bedrooms



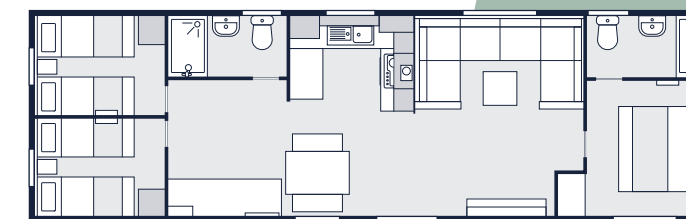
4. 36 ft x 12 ft 3 Bedrooms



5. 38 ft x 12 ft 2 Bedrooms



6. 39 ft x 12 ft 3 Bedrooms



7. 40 ft x 12 ft 3 Bedrooms





# JOIN THE VICTORY *Family*

Your holiday home is your sanctuary, your party spot, your family hub. It's more than a destination, it's a place in your heart. Memories that will last generations are made and shared here. Join the Victory Family and make your holiday, *home*.

Scan to join the Victory Family,  
or visit [victoryleisurehomes.co.uk](https://victoryleisurehomes.co.uk)



## JUST SOME OF THE BENEFITS YOU'LL ENJOY



Chat with other Victory owners and share tips and advice



Be among the first to meet our new additions to the family



Get a unique family pack with the essentials you need to make your holiday, *home*



Share your Victory memories with us on social media

# VISIT OUR SHOWGROUNDS

Whether you're a first-time buyer, seasoned holiday home owner, or trade customer, our showgrounds are the perfect place to find your next Victory. Our showgrounds in East Yorkshire and Somerset will be there for you, and our teams are waiting (with the kettle on) to answer your questions and show you around.

Book your appointment by scanning the QR code or visit our website, and a member of our team will be in touch to arrange the finer details and confirm your appointment.

To make sure you have all the time you need to look around the homes and chat to our team, we need 7 days' notice for any appointments.

## Book your appointment



### EAST YORKSHIRE (HU15)

Monday - Friday, appointment only

### SOMERSET (TA9)

7 days a week, appointment only

Scan to book an appointment,  
or visit [victoryleisurehomes.co.uk](https://victoryleisurehomes.co.uk)







Broad Lane, Gilberdyke, East Yorkshire, HU15 2TD  
01430 471200 [marketing@victoryleisurehomes.co.uk](mailto:marketing@victoryleisurehomes.co.uk)

This brochure is designed to provide an illustrative representation of our homes. Some colours may be affected in digital print. All features correct at time of issue (August 2023) but are subject to change - the most up to date product specifications can be found on our website [victoryleisurehomes.co.uk](http://victoryleisurehomes.co.uk)